

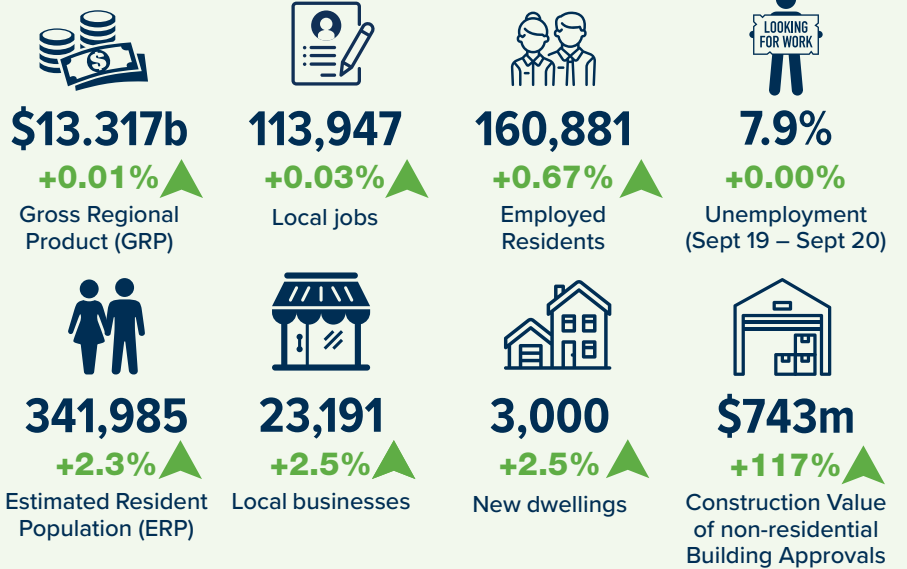
CITY OF LOGAN

BI-ANNUAL ECONOMIC ANALYSIS

June 2020 Economic Analysis

Logan City Council collects key economic statistics and information to measure how the city is performing. This information has been compiled into the Economic Analysis Report, June 2020 issue. The most recently released data is presented in this report, but may refer to different time periods depending on the frequency of the data collected by the relevant agency. Note: this data runs from July 2019 to June 2020 and includes the initial impacts of the COVID-19 pandemic.

KEY ECONOMIC INDICATORS



GROSS REGIONAL PRODUCT (GRP)

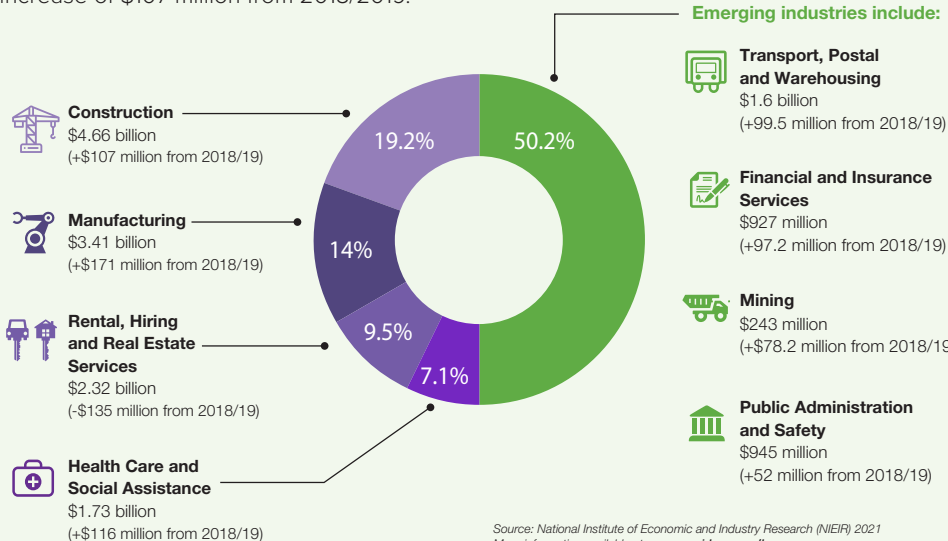
The City of Logan's economy was in a strong position going into COVID-19 with sustained and consistent growth in GRP increasing by 14.9% from 2015 to 2020, this is an average increase of 2.9% per year.

The City of Logan's Gross Regional Product was \$13.317b as of the 30th June 2020. Growth was flat at 0.01%, as the June 2019 figure was **\$13.315b**. Queensland's GRP fell 0.5% from June 2019 to June 2020.

Year (ending June 30)	GRP \$m	% change from previous year
2020	13,317	+0.01
2019	13,315	+2.90
2018	12,939	+5.89
2017	12,219	+3.47
2016	11,809	+2.53

INDUSTRY

In the City of Logan, Construction had the largest output by industry, generating \$4.661 billion in 2019/20, an increase of \$107 million from 2018/2019.



Five industries saw a reduction of output in the 12 months to June 2020:

- Rental, Hiring and Real Estate Services (particularly Property Operators and Real Estate Services) - \$2.32b (-\$135m)
- Professional, Scientific and Technical Services - \$975m (-\$44.3m)
- Wholesale Trade - \$1.35b (-\$17.7m)
- Administrative and Support Services (particularly Building Cleaning, Pest Control and Other Support Services) - \$895m (-\$12.9m)
- Agriculture, Forestry and Fishing - \$164m (-\$1.5m)

Source: National Institute of Economic and Industry Research (NIEIR) 2021
More information available at economy.id.com.au/logan

LOCAL JOBS

There were 113,947 jobs located in Logan City in the year ending June 2020. This represents a 0.03% increase from 113,916 jobs at June 2019.

Logan has recorded strong local jobs growth of 12.7% from June 2016 to June 2020. Average local jobs growth is 2.5% over the last 5 years.

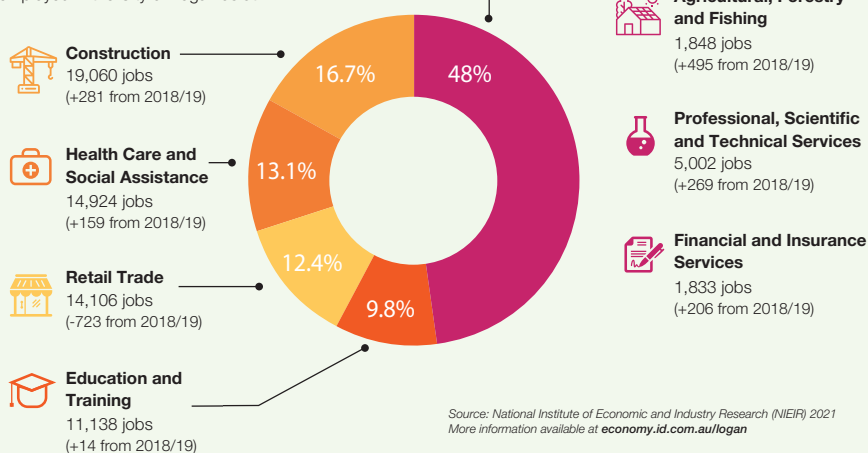
* Note: jobs are not necessarily full-time and the value of a job varies across areas.

Year (ending June 30)	Number	% change from previous year
2020	113,947	+0.03
2019	113,916	+1.98
2018	111,705	+5.76
2017	105,617	+1.73
2016	103,819	+3.21

Period: Quarter	Unemployment Rate %					Change in% points
	Sep 19	Dec 19	Mar 20	Jun 20	Sep 20	Sep 19 to Sep 20
Australia	5.1	5.2	5.2	5.6	6.1	+1.0
Queensland	6.2	6.1	6.1	6.4	6.8	+0.6
Brisbane	5.5	5.4	5.4	5.6	5.7	+0.2
Gold Coast	5.8	5.7	5.5	5.8	6.4	+0.6
Moreton Bay	6.9	6.7	6.8	7.2	7.7	+0.8
Redland	4.9	4.5	4.4	6.2	7.5	+2.6
Ipswich	7.1	7.4	7.9	8.6	8.7	+1.6
City of Logan	7.9	7.9	7.8	7.4	7.9	0.0

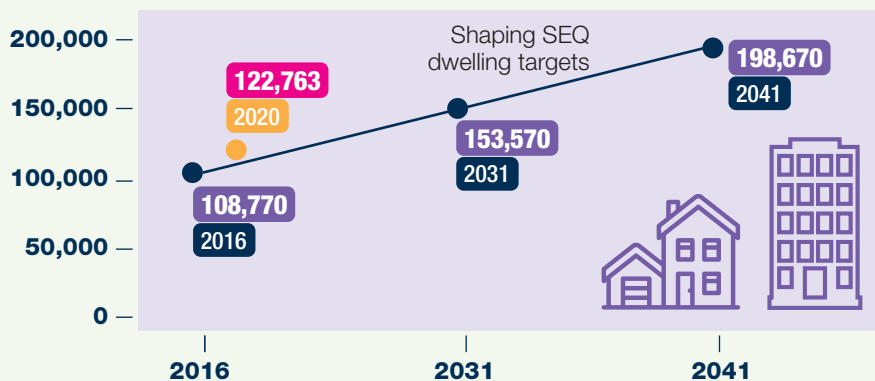
EMPLOYMENT BY INDUSTRY (TOTAL)

A measure of the total number of people employed in the City of Logan as at



CITYPULSE – DEVELOPMENT ACTIVITY HIGHLIGHTS

- Non-residential - There was a significant increase of new non-residential development approvals in terms of approved Gross Floor Area (GFAM²) for 2019/2020 up 61.5% from 2018/2019.
- Building Approval increases have been driven by strong growth in Warehouse Distribution and Logistics demand (219,320m² in 2019/2020).
- 3,000 dwellings have been added to the city's housing stock (122,763). Of these additional dwellings the most popular dwelling type was Stand-alone house, followed by House with secondary/auxiliary unit, then followed by Duplex/ Townhouse
- Logan is on track to deliver our dwelling number targets that are set by the State Government's SEQ Regional Plan (ShapingSEQ). As at June 2020 we have 122,763 dwellings, moving towards 198,670 by 2041.



SOURCES:

Australian Bureau of Statistics, Counts of Australian Businesses, including Entries and Exits, 2016 to 2020

Australian Bureau of Statistics, Estimated Resident Population (ERP) and components by Local Government Area 2016 to 2020

Economy.id industry structure and industry sector profiles use a National Accounts regional econometric model developed by National Institute of Economic and Industry Research (NIEIR) economy.id.com.au

Economic Development and Strategy Branch, Logan City Council, including City Pulse data from Logan Office of Economic Development & Strategy loed.com.au/city-pulse

Small Area Labour Markets Australia, Australian Government, Department of Employment, Skills, Small & Family Business, ABS State Details

FOR MORE INFORMATION CONTACT:

Logan Office of Economic Development

E: loed@logan.qld.gov.au

P: 07 3412 4888

loed.com.au

