

Logan City Council collects key economic statistics and information to understand how the city is performing. This information has been compiled into the Bi-annual Economic Analysis Report for April – September 2017.

CITY OF LOGAN



\$11.243b

GRP (Gross Regional Product)
FY 2015-16



20,393

Number of Logan Businesses
(Jun 16)



3,095

New business registrations
(Apr – Sep 17)



\$40,435

Per Capita GRP
FY 2015-16



6.1%

Unemployment
(from 5.1% Mar 17 quarter)



165

Business exits
(Apr – Sep 17)

LABOUR MARKET & UNEMPLOYMENT

The unemployment rate for the City of Logan as at 30 June 2017 was 6.1%. This is an increase of 0.5% from the March 2017 quarter (5.6%) and down from 30 June 2016 (6.5%).

Logan employment summary	March quarter	June quarter	% change
Percentage of unemployed persons	5.6%	6.1%	8.9% ↗
No. of unemployed persons	7,958	9,014	13.2% ↗
Persons in labour force	142,824	147,814	3.5% ↗

Unemployment is measured by the Australian Bureau of Statistics with the following criteria:

- not working more than one hour in the reference week.
- actively looking for work in previous four weeks.
- be available to start work in the reference week.
- aged 15 years and over and not employed during the reference week.

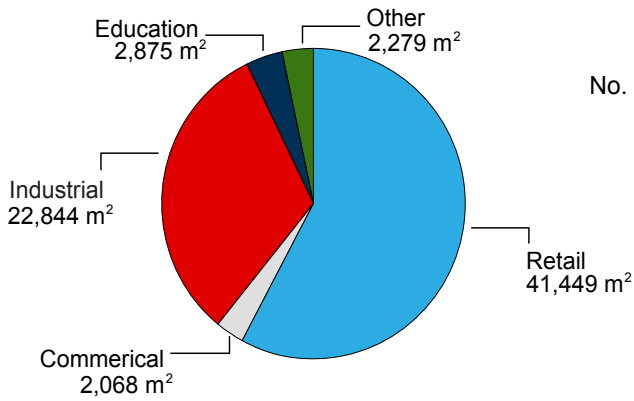
CITY OF LOGAN QUICK FACTS

Quick Facts	City of Logan	Queensland
Population	313,785 (2016)	4,848,877 (Mar 16)
Population projection 2036	490,522	6,763,153
Businesses	20,393 (Jun 16)	425,333 (Jun 16)
*Jobs	*To be updated from revised ABS 2016 Census	
Unemployment	6.1% (Jun 17)	6.2% (Jun 17)
Gross Regional Product	\$11.243b (2015-16)	\$316.208b (2015-16)
Per Capita Gross Regional Product	\$40,435 (2015-16)	\$72,981b (2015-16)
Output	\$21.789b (2015-16)	\$667.276b (2015-16)

VALUE OF APPROVALS

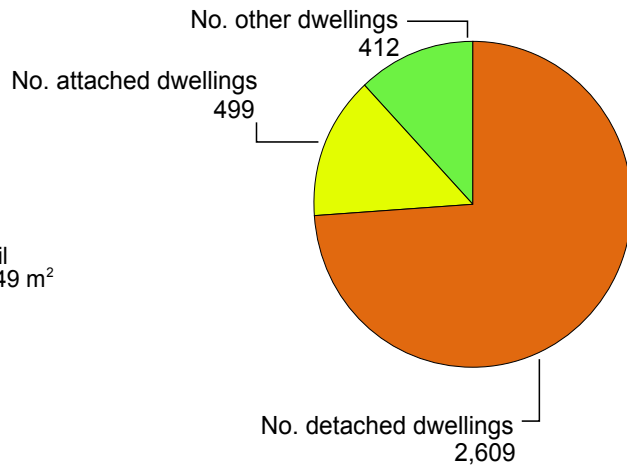
Non-residential Approvals

71,514m² GFA
\$85.614 million



Residential Approvals

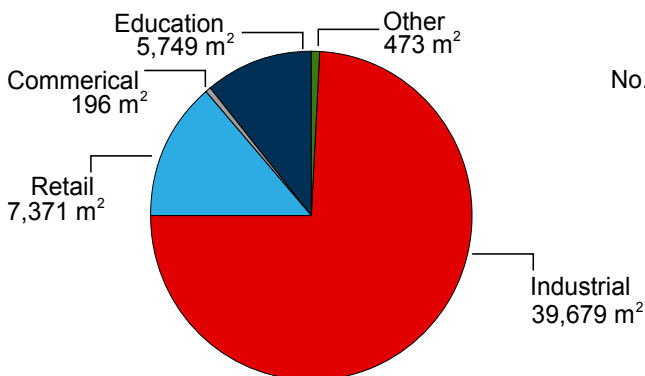
3,520 dwellings
\$913.626 million



VALUE OF CONSTRUCTION

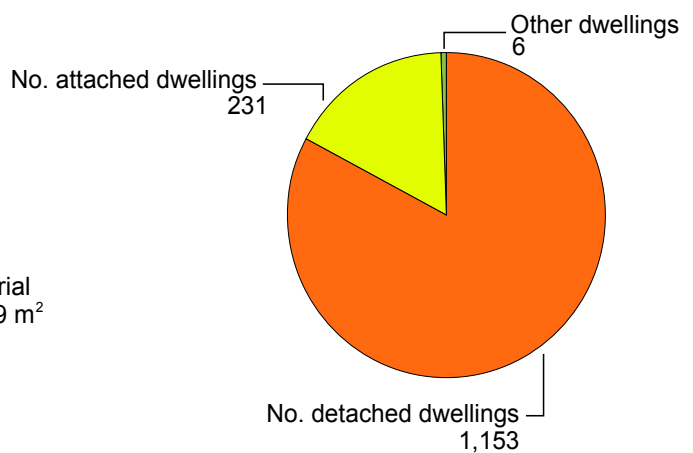
Non-residential Development

53,468 m² GFA
\$52.393 million

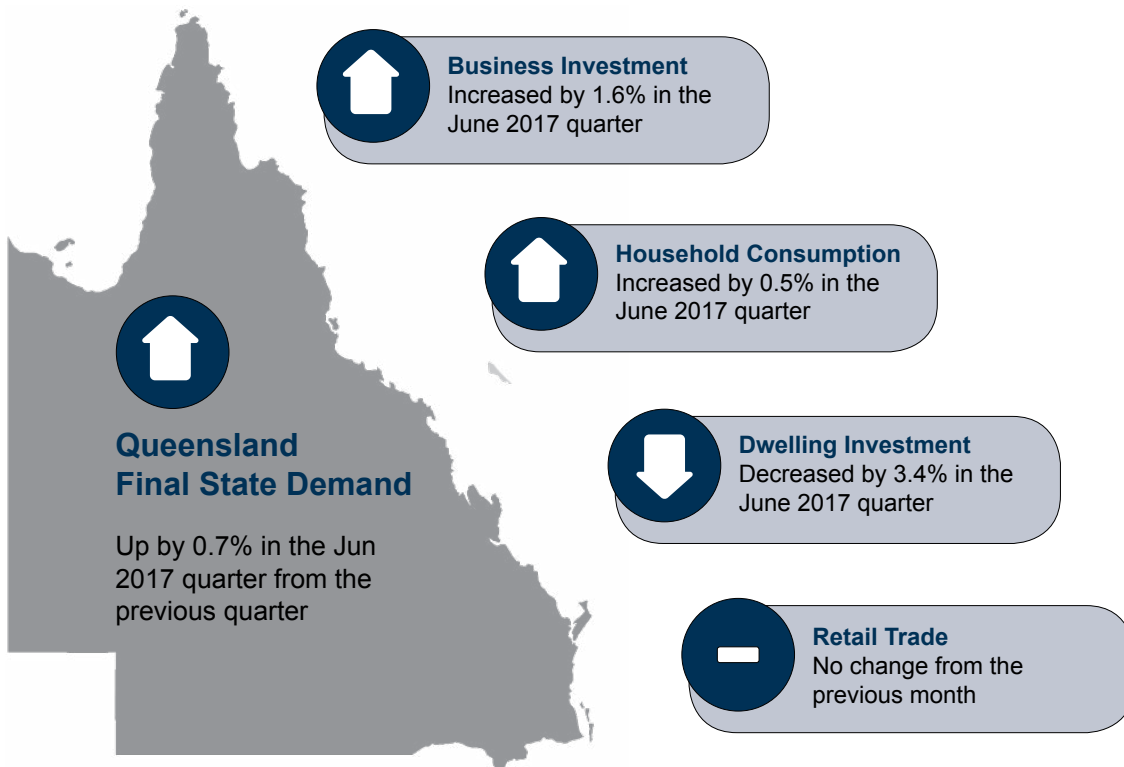


Residential Development

1,390 dwellings
\$370 million



The Development Monitoring Report for January to June 2017 and other development statistics for the City of Logan, is available on the [Logan City Council website](#).



- CPI inflation rose by 0.4% in September 2017 quarter (capital city - Brisbane);
- Building approvals fell by 0.5% in September 2017;
- Growth in employment rose by 0.3% for September 2017; and
- Unemployment rate 5.9% for September 2017.

*Note: figures and statistics above were the latest information available at the time of production.

SOURCES

Business entries and exits, Australian Business Register (ABR), Australian Government

Australian Bureau of Statistics, Counts of Australian Businesses, including Entries and Exits, Cat. 8165.0. (Jun 2014, 2015 & 2016, released 21 Feb 2017. Jun 2017 data will be available in Feb 2018.)

Small Area Labour Market Data June 2017, Australian Government, Department of Employment

ABS State Details, June quarter 2017, ABS 5206.0, released 6 September 2017, 11:30am (AEST)

Retail trade, September 2017, ABS 8501.0, released 3 November 2017, 10:30am (AEST)

Queensland Government Statistician’s Office, Queensland Regional Database

REMPAN data incorporating Australian Bureau of Statistics (ABS) June 2016 Gross State Product, 2013/2014 National Input Output Tables - <http://www.economyprofile.com.au/logan/>