

Logan City Council collects key economic statistics to understand how the city is performing. This information has been compiled into the Quarterly Economic Report for July – September 2016.

CITY OF LOGAN



\$10.659b
GRP
(Gross Regional Product)



492
New business registrations
(Jul-Sep 2016)



5.9% ↘
Unemployment
(from 6.9% June quarter)



19,502
Logan businesses
(ABS - actively registered
for GST)



125
Business exits
(Jul-Sep 2016)

LABOUR MARKET & UNEMPLOYMENT

The unemployment rate for the City of Logan as at 30 September 2016 was 5.9%. This is down from the previous quarter, which was 6.5% and down from 12 months ago when it was 8.7%.

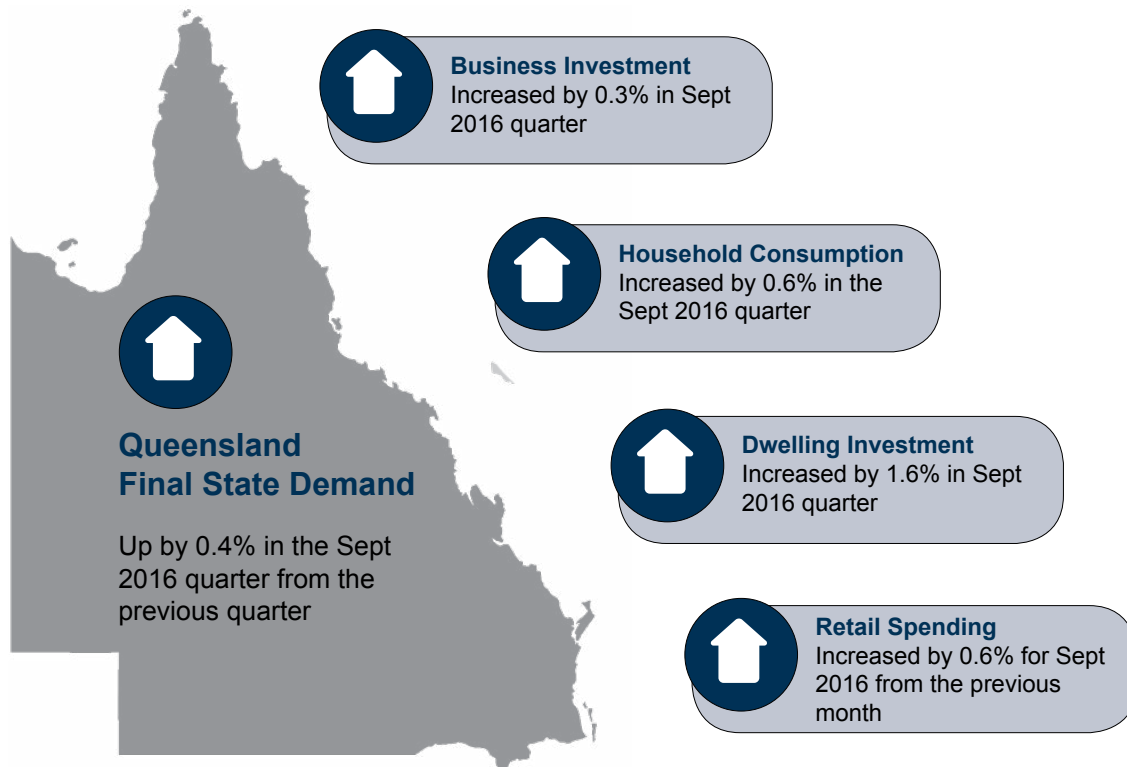
Logan employment summary	June quarter	September quarter	% difference
No. of employed persons	125,034	128,660	2.9% ↗
No. of unemployed persons	8,660	8,086	- 6.6% ↘
Persons in labour force	133,694	136,746	2.2% ↗

Unemployment is measured by the Australian Bureau of Statistics with the following criteria:

- not working more than one hour in the reference week.
- actively looking for work in previous four weeks.
- be available to start work in the reference week.
- aged 15 years and over and not employed during the reference week.

CITY OF LOGAN QUICK FACTS

Quick Facts	City of Logan	Queensland
Population	308,681	4,778,854
Population projection 2036	490,522	6,763,153
Businesses	19,502	409,984
Jobs	72,745	1,967,425
Unemployment	5.9%	6.1%
Gross Regional Product	\$10.659b	\$305.354b
Per Capita Gross Regional Product	\$38,338	\$70,476
Output	\$20.737b	\$644.289b



SOURCES

Australian Bureau of Statistics, Counts of Australian Businesses, including Entries and Exits, Cat. 8165.0 (Jun 2012, Released May 2015. Jun 2013, 2014 & 2015, Released 26 Feb 2016. Jun 2016 data will be available in Feb 2017)

ABS 8501.0, released 4 November 2016, 10.30am (AEST)

ABS 5206.0, released 7 December 2016, 10.30am (AEST)

Australian Government, Australian Business Register

Australian Government, Department of Employment

CommSec State of the State report - September 2016

Queensland Government Statistician's Office, Queensland Regional Database

REMPAN data incorporating Australian Bureau of Statistics' (ABS) June 2015 Gross State Product, 2012 / 2013 National Input Output Tables and 2011 Census Place of Work Employment data. <http://www.economicprofile.com.au/logan>