

Logan City Council collects key economic statistics and information to understand how the city is performing. This information has been compiled into the Quarterly Economic Report for January – March 2017.

CITY OF LOGAN



\$11.243b

GRP (Gross Regional Product)



454

New business registrations (Jan – Mar 2016)*



5.6%

Unemployment (5.6% in Dec quarter)



\$40,435

Per Capita Gross Regional Product



11

Business exits (Jan – Mar 2016)*



20,393

Logan businesses*

*Businesses actively registered for GST only

LABOUR MARKET & UNEMPLOYMENT

The unemployment rate for the City of Logan as at 31 March 2017 was 5.6%. This is the same as the previous quarter, which was 5.6% and down from 12 months ago when it was 7.2%.

Logan employment summary	December 2016 quarter	March 2017 quarter	% difference
Percentage of unemployed persons	5.6%	5.6%	0%
No. of unemployed persons	7,831	7,953	1.5% ↗
Persons in labour force	139,694	143,009	2.3% ↗

Unemployment is measured by the Australian Bureau of Statistics with the following criteria:

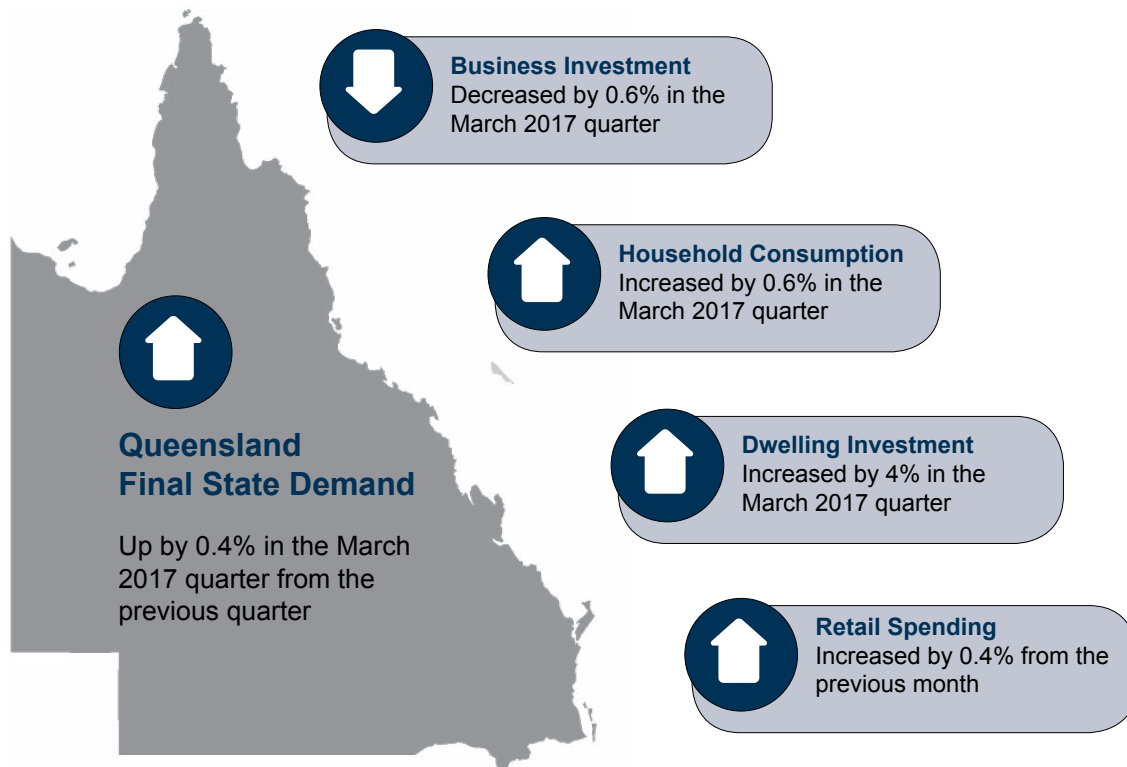
- not working more than one hour in the reference week.
- actively looking for work in previous four weeks.
- be available to start work in the reference week.
- aged 15 years and over and not employed during the reference week.

CITY OF LOGAN QUICK FACTS

Quick Facts	City of Logan	Queensland
Population	313,646*	4,860,448**
Population projection 2036	490,522	6,763,153
Businesses	20,393	425,333
Jobs	72,745	1,967,425
Unemployment	5.6%	6.3%
Gross Regional Product	\$11.243b	\$316.208b
Per Capita Gross Regional Product	\$40,435	\$72,981
Output	\$21.789b	\$667.276b

*Update of Estimated Resident Population (ERP) as at 30 June 2016

**Update of ERP as at 30 September 2016



SOURCES

ABS 5206.0 - ABS State Details: March 2017 (released 7 June 2017, 11.30am AEST).

ABS 8501.0 - Retail Trade March 2017 (released 9 May 2017, 11.30am AEST).

Australian Bureau of Statistics, Counts of Australian Businesses, including Entries and Exits, Cat. 8165.0. (Jun 2014, 2015 & 2016, released 21 Feb 2017.)

Australian Government, Australian Business Register (accessed online 21 June 2017).

Australian Government, Department of Employment, Small Area Labour Markets Report (March Quarter 2017).

Queensland Government Statistician's Office, Queensland Regional Database.

REMPPLAN data incorporating Australian Bureau of Statistics' (ABS) June 2016 Gross State Product, 2012 / 2013 National Input Output Tables and 2011 Census Place of Work Employment data. <http://www.economicprofile.com.au/logan>.