

Logan City Council collects key economic statistics to understand how the city is performing. This information has been compiled into the Quarterly Economic Report for April – June 2016.

CITY OF LOGAN



19,500

Logan businesses (ABS)



395

New business registrations (Apr-Jun 2016)



6.5% ↘

Unemployment (from 7.2% March quarter)



\$724.4m

Development approvals (Jan-Jun 2016)



\$501.4m

Construction value (Jan-Jun 2016)

LABOUR MARKET & UNEMPLOYMENT

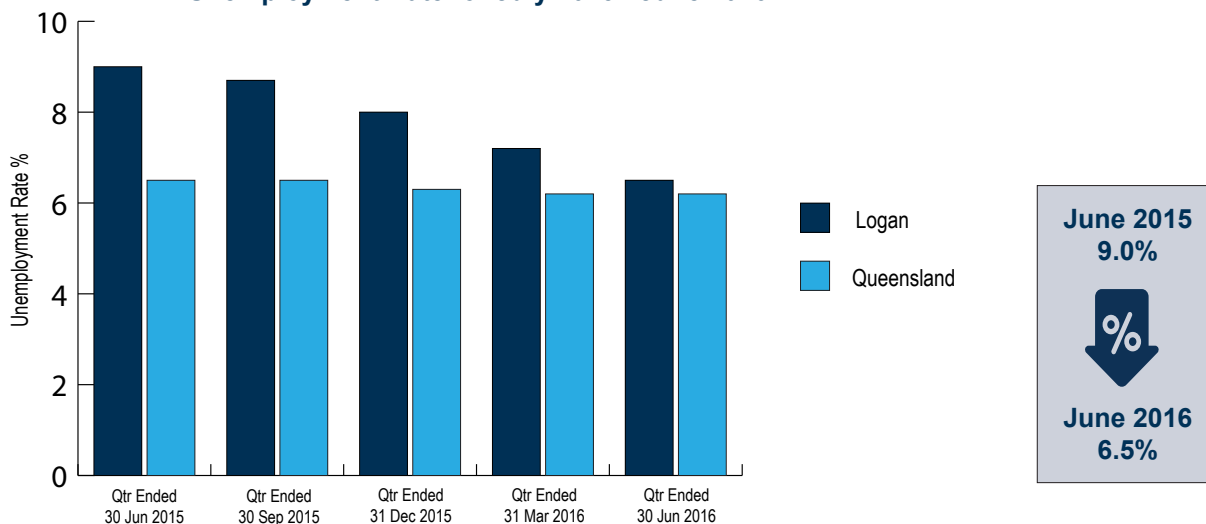
The unemployment rate for the City of Logan as at 30 June 2016 was 6.5%. This is down from a peak of 9.0% unemployment for the June 2015 quarter.

Unemployment is measured by the Australian Bureau of Statistics with the following criteria:

- not working more than one hour in the reference week.
- actively looking for work in previous four weeks.
- be available to start work in the reference week.
- aged 15 years and over and not employed during the reference week.

Logan employment summary	June quarter	March quarter	% difference
No. of employed persons	125,034	122,547	2.03% ↗
No. of unemployed persons	8,660	9,450	8.36% ↘
Persons in labour force	133,694	133,997	0.23% ↗

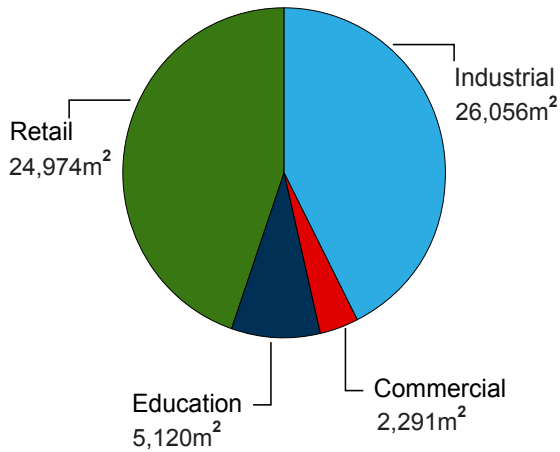
Unemployment Rate for July 2015 - June 2016



VALUE OF APPROVALS

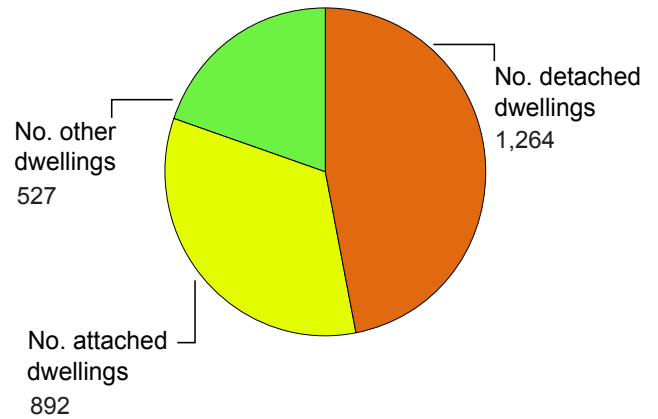
Non-residential Approvals

58,441 m² GFA
\$83.3million



Residential Approvals

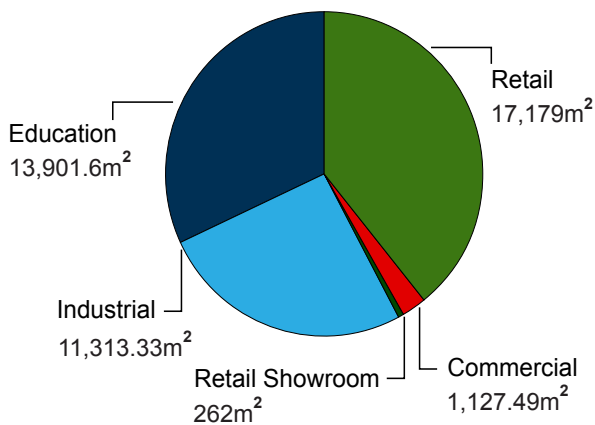
2,683 dwellings
\$641.1 million



VALUE OF CONSTRUCTION

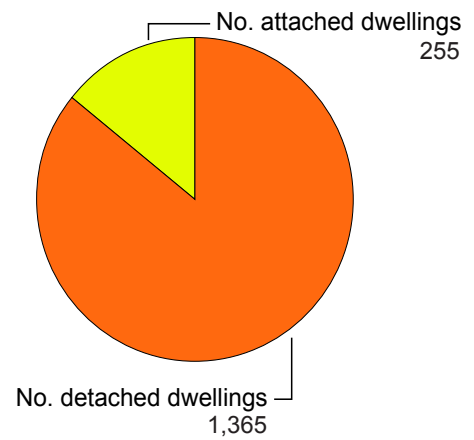
Non-residential Development

43,783 m² GFA
\$68.4 million



Residential Development

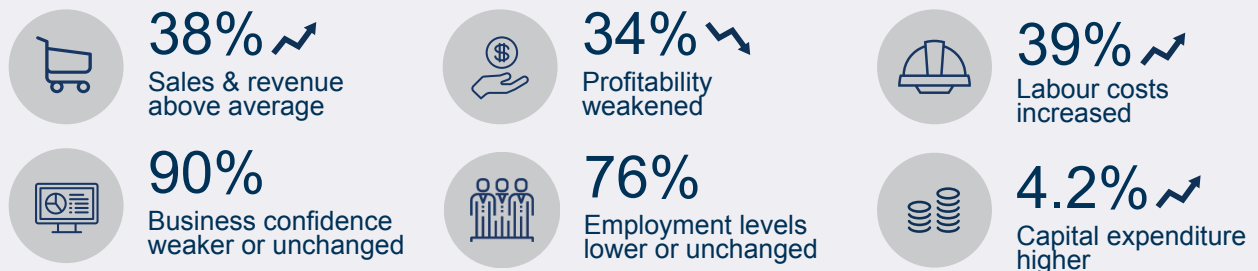
1,620 dwellings
\$433.0 million



Local insights on the sentiments of Logan businesses for the June 2016 Quarter have been sourced from the **CCIQ Pulse Survey of Business Conditions**.

The Pulse Survey has been run for over two decades by the Chamber of Industry and Commerce Queensland (CCIQ), the state's leading advocacy body for businesses. The survey is recognised as being a timely and comprehensive snapshot of Queensland business sentiment.

Below is a snapshot of the percentage of Logan-based businesses' views on conditions:



A summary of results indicates the following:

- Overall business confidence in Logan was lower than the Queensland average, with an unchanged or weaker outlook for the Queensland economy.
- Of the businesses surveyed, sales and revenue were above the South East Queensland (SEQ) average.
- Over one third of local businesses indicated that labour costs had increased during the June 2016 quarter.
- More than three quarters of businesses indicated that employment levels were unchanged or lower than the previous quarter.
- Capital expenditure for businesses was higher than that of the SEQ and State averages.

Pulse Business Index results

To measure the sentiment of businesses over time, the survey provides a numerical classification calculated using the **Pulse Business Index (PBI)** together with survey results. The PBI provides an indication of how businesses perceived their performance in comparison to the previous quarter. It is also useful to compare results with other Local Government Areas.

As a guide, the PBI reading of above 50 indicates conditions have improved over the previous quarter. A reading of 50 indicates conditions have remained the same and less than 50 indicates conditions have deteriorated.

Businesses rated the performance of the Queensland economy and the conditions in the following areas.

Measure	Logan	Brisbane	Gold Coast
Queensland Outlook	38.8	40.2	41.0
General Business Conditions	42.2	45.4	42.9
Total Sales/Revenue	53.4	53.1	52.1
Profitability	44.8	47.3	41.7
Labour Costs	59.8	56.0	62.5
Employment Levels	50.0	49.7	53.5
Capital Expenditure	53.4	49.5	48.6

Pulse Business Index - interpretation guide			
Very poor	0 — 29.99 Points	Good	65 — 74.99 Points
Poor	30 — 49.99 Points	Very good	75 — 84.99 Points
Satisfactory	50 — 64.99 Points	Excellent	85 — 100 Points

QUEENSLAND OVERVIEW

Queensland shifts from fifth to sixth spot on the economic performance rankings. While second-ranked on dwelling statistics, it is bottom-ranked on construction work and seventh-ranked on economic growth and unemployment.

Key categories	Level this quarter	Compared with decade average
Dwelling commencements	12,958	42.3%
Population growth	1.26%	-37%
Economic growth	\$77,130m	4.4%
Equipment investment	\$2,144m	-26.5%
Housing finance	10,659	1.7%
Retail spending	\$14,503m	9.9%
Construction work	\$9,181m	-19.5%

CITY OF LOGAN QUICK FACTS

Quick Facts	City of Logan	Queensland
Population	308,681	4,778,854
Population projection 2036	490,522	6,763,153
Businesses	19,502	409,984
Jobs	72,745	1,967,425
Unemployment	6.5%	6.2%
Gross Regional Product	\$10.659b	\$305.354b
Per Capita Gross Regional Product	\$38,338	\$70,476
Output	\$20.737b	\$644.289b

SOURCES

Australian Bureau of Statistics, Counts of Australian Businesses, including Entries and Exits, Cat. 8165.0 (Jun 2012, Released May 2015. Jun 2013, 2014 & 2015, Released 26 Feb 2016. Jun 2016 data will be available in Feb 2017)

Australian Government, Australian Business Register

Australian Government, Department of Employment

Chamber of Commerce & Industry Queensland, Pulse Survey of Business Conditions, June 2016 Quarter

CommSec State of the State report – July 2016

Development Monitoring Report – January 2009 to June 2016, Logan City Council

Queensland Government Statistician's Office, Queensland Regional Database

REMPAN data incorporating Australian Bureau of Statistics' (ABS) June 2015 Gross State Product, 2012 / 2013 National Input Output Tables and 2011 Census Place of Work Employment Data. <http://www.economicprofile.com.au/logan>