

Logan City Council collects key economic statistics and information to understand how the city is performing. This information has been compiled into the Quarterly Economic Report for October - December 2016.

## CITY OF LOGAN



**\$11.243b**  
GRP  
(Gross Regional Product)



**937**  
New business registrations  
(Oct-Dec 2016)



**5.6%** ↘  
Unemployment  
(from 5.9% Sept quarter)



**\$40,435**  
Per Capita Gross Regional  
Product



**757**  
Business exits  
(Oct-Dec 2016)



**\$803.8m**  
Development approvals  
(Jul-Dec 2016)



**\$835m**  
Construction value  
(Jul-Dec 2016)

## ECONOMY

The City of Logan's economy is growing, with the latest economic data indicating an overall upward trend, consistent with previous years. From June 2015 to 2016, Logan's Gross Regional Product (GRP) grew to \$11.24 billion, increasing more than half a billion dollars. Logan represents 5.87 % of South East Queensland's GRP of \$191.375 billion, 3.56 % of Queensland's Gross State Product (GSP) of \$316.208 billion.

Key movements in the local economy are listed below:

Report	June 2015*	June 2016**	Change %
Output	\$20.737b	\$21.789b	5% ↗
Value-added	\$ 9.501b	\$ 9.951b	4.7% ↗
Wages & Salaries	\$ 5.031b	\$ 5.283b	4.8% ↗
Local sales	\$ 6.343b	\$ 6.711b	5.8% ↗

For more information visit the Logan Office of Economic Development website and Remplan.

\*Data released in April 2016 \*\*Data released in December 2016

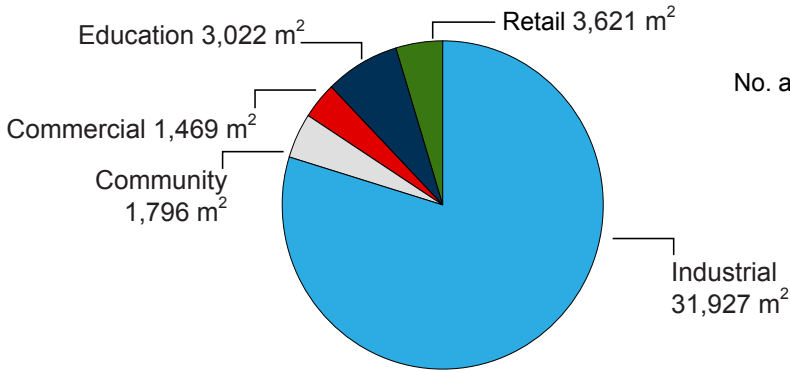
GRP can be measured by using the income or expenditure method. The expenditure approach in the table below represents all forms of final expenditure. This method is used to calculate Gross State Product (GSP) at a state level and Gross Domestic Product (GDP) at a national level.

GRP Expenditure Method \$ (million)	Logan (Jun 2015)	Logan (Jun 2016)
Household Consumption	\$12,617.815	\$13,496.270
Government Consumption	\$3,202.805	\$3,417.053
Private Gross Fixed Capital Expenditure	\$4,113.236	\$4,271.322
Public Gross Fixed Capital Expenditure	\$908.719	\$904.859
<b>GROSS REGIONAL EXPENSES</b>	<b>\$20,842.575</b>	<b>\$22,089.504</b>
plus Regional Exports	\$4,307.285	\$4,410.277
minus Domestic Imports	-\$12,378.458	-\$12,977.086
minus Overseas Imports	-\$2,111.508	-\$2,279.681
<b>GROSS REGIONAL PRODUCT</b>	<b>\$10,659.894</b>	<b>\$11,243.013</b>

VALUE OF APPROVALS

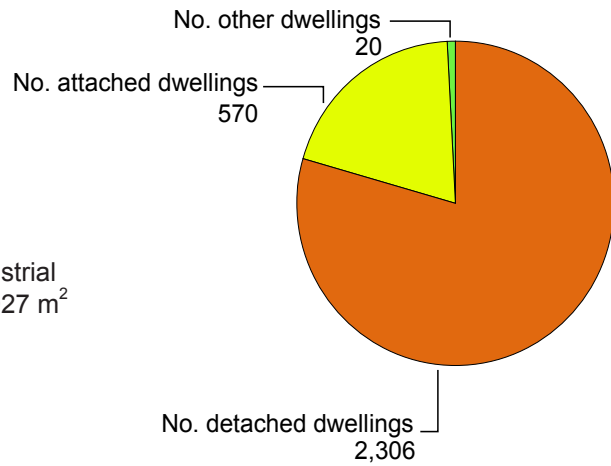
Non-residential Approvals

41,837m<sup>2</sup> GFA  
\$40.0 million



Residential Approvals

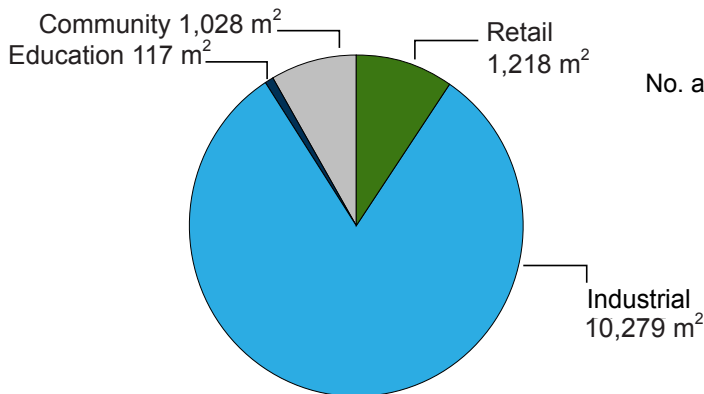
2,896 dwellings  
\$763.8 million



VALUE OF CONSTRUCTION

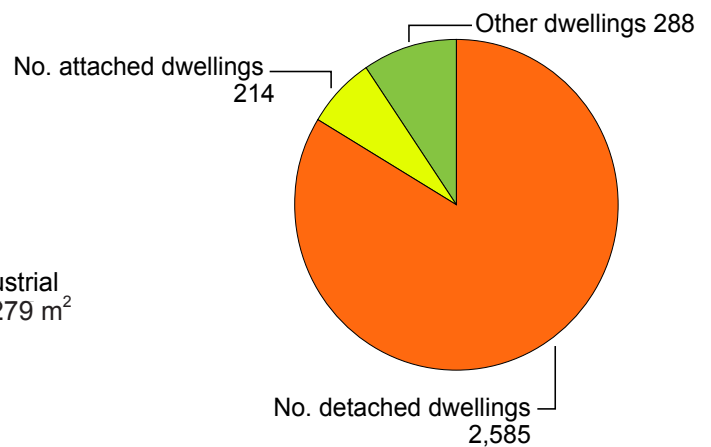
Non-residential Development

12,643 m<sup>2</sup> GFA  
\$11.0 million



Residential Development

3,087 dwellings  
\$823.9 million



## LABOUR MARKET & UNEMPLOYMENT

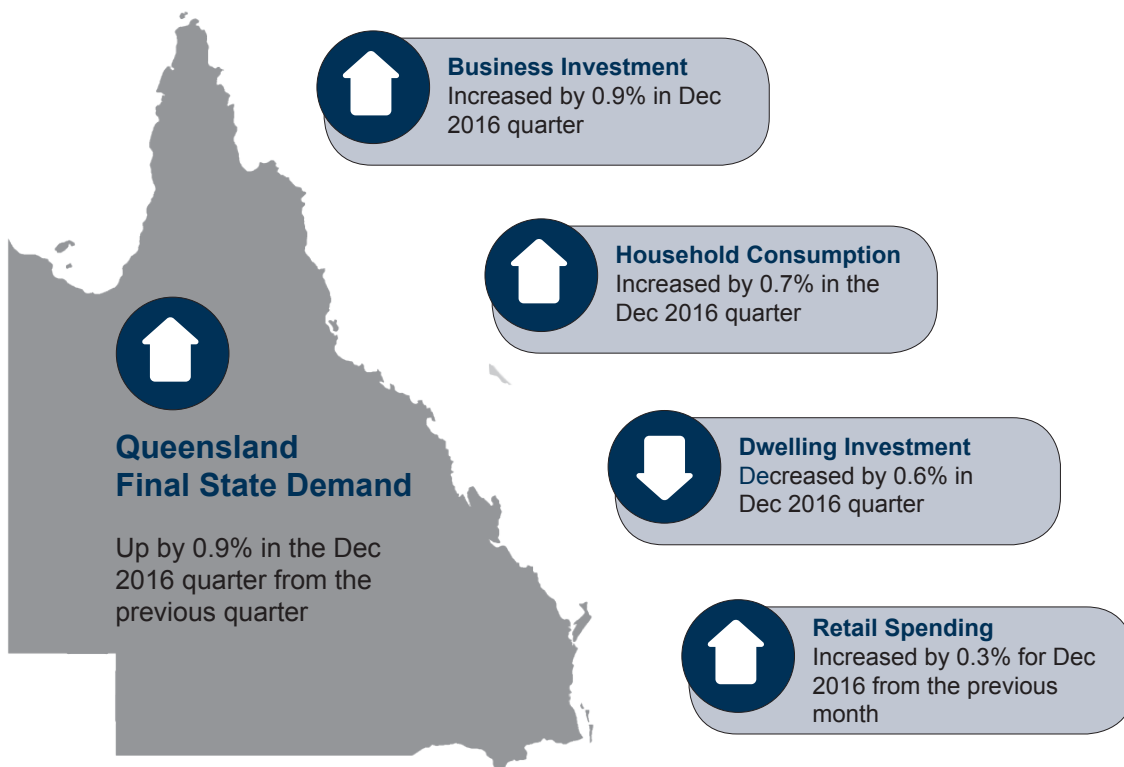
The unemployment rate for the City of Logan as at 31 December 2016 was 5.6%. This is down from the previous quarter which was 5.9% and down from 12 months ago when it was 8.0%.

Unemployment is measured by the Australian Bureau of Statistics with the following criteria:

- not working more than one hour in the reference week;
- actively looking for work in previous four weeks;
- be available to start work in the reference week;
- aged 15 years and over and not employed during the reference week.

Logan employment summary	September quarter	December quarter	% change
Percentage of unemployed persons	5.9%	5.6%	<b>5.08%</b> ↘
No. of unemployed persons	8,061	7,831	<b>2.85%</b> ↘
Persons in labour force	136,669	139,694	<b>2.21%</b> ↗

## QUEENSLAND OVERVIEW



- Queensland Final State Demand for December 2016 quarter is up by 0.9% from the previous quarter;
- Household consumption (trend) rose 0.7% in December 2016 quarter;
- Dwelling investment fell 0.6% in December 2016 quarter;
- Business investment increased by 0.9% for December 2016 quarter;
- Retail trade increased by 0.3% for December 2016 from the previous month;
- International exports (trend) increased by 1.7% in December 2016 quarter.

## CITY OF LOGAN QUICK FACTS

Quick Facts	City of Logan	Queensland
Population	308,681	4,778,854
Population projection 2036	490,522	6,763,153
Businesses	19,502	409,984
Jobs	72,745	1,967,425
Unemployment	5.6%	6.1%
Gross Regional Product	\$11.243b	\$316.208b
Per Capita Gross Regional Product	\$40,435	\$72,981
Output	\$21.789b	\$667.276b

## SOURCES

Australian Bureau of Statistics, Counts of Australian Businesses, including Entries and Exits, Cat. 8165.0. (Jun 2014, 2015 & 2016, released 21 Feb 2017. Jun 2017 data will be available in Feb 2018.)

ABS State Details, December quarter 2016

ABS 5206.0 - Australian National Accounts: National Income, Expenditure and Product, Dec 2016 (released 1 March 2017, 10.30am AEST)

Australian Government, Australian Business Register

Australian Government, Department of Employment

CommSec State of the State report - December 2016

Queensland Government Statistician's Office, Queensland Regional Database

REMPAN data incorporating Australian Bureau of Statistics' (ABS) June 2015 Gross State Product, 2012 / 2013 National Input Output Tables and 2011 Census Place of Work Employment data. <http://www.economicprofile.com.au/logan>